

Chateaubriand 2025-2026

Webinar Information Session



**AMBASSADE
DE FRANCE
AUX ÉTATS-UNIS**

*Liberté
Égalité
Fraternité*

Service pour la Science
et la Technologie
Office for Science and
Technology



**france
science**

FRANCE

A Country of Rich Cultural Heritage and Diverse Landscapes

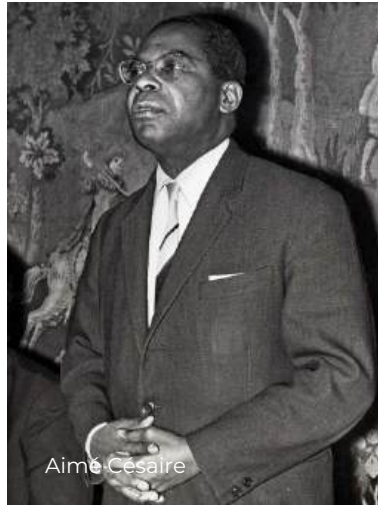
- Hosts the world's 5th largest number of cultural UNESCO World Heritage Sites, drawing around 89 million foreign tourists annually (1st in the world)
- Renowned sites, architectural heritage, museums
- Rich cultural traditions: literature, painting, cinema, singing



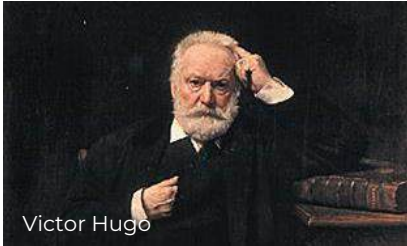
Marseille



Paris



Aimé Césaire



Victor Hugo



Leïla Slimani



Aya Nakamura



Marion Cotillard



2024 Paris Olympic Games



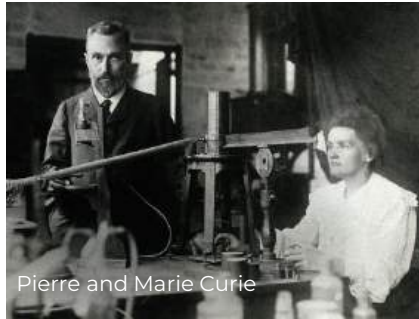
Monet



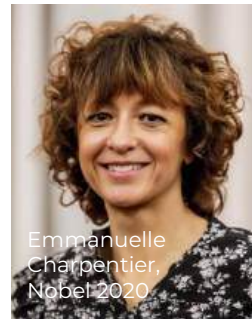
Alain Aspect,
Nobel 2022



Cédric Villani



Pierre and Marie Curie



Emmanuelle
Charpentier,
Nobel 2020

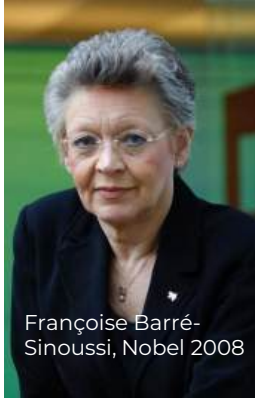
FRANCE

A Major Contributor to Science

- Famous French scientists
75 Nobel Prizes,
13 Fields Medals
- High quality research facilities
- Successful technologies



Louis Pasteur



Françoise Barré-
Sinoussi, Nobel 2008



SNCF



Airbus A380



Lavoisier



Wind turbine
Burgundy, France



Viaduc de Millau

French Research & Innovation: Key Figures



49.5 B €
2,27% of GDP
dedicated to R&I



604 700 persons
involved in R&I
(285000 researchers)



14 500 PhD
degrees delivered
every year



41% foreign
PhD students



4th position
in terms of EU patents
applications



7th W-W position
in terms of scientific
publications

4th in terms of impact
(H index)



CNRS
1st institution
W-W in terms of scientific
publications



57%
of international
copublications

About the Chateaubriand Stem Program

Created in
1981

All STEM & Health
Fields are Included

Agreement
between US Thesis
Advisor and
French Advisor to
jointly supervise
the research
project

Stipend of up
to 1750 euros
per month



Chateaubriand
Fellowship Program

Science, Technology,
Engineering, Math
& Health 

Website
<http://chateaubriand-fellowship.org>

About the Chateaubriand Humanities Program

4-month-fellowship: fall or spring

All humanities included (literature, musicology, sociology, philosophy, etc)

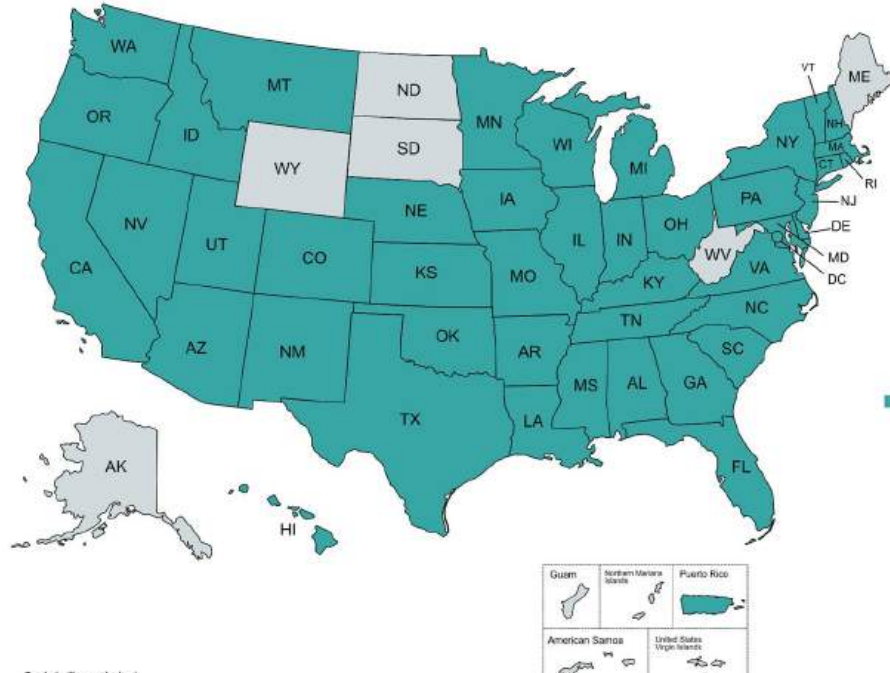
As a national governmental French fellowship: help with housing, healthcare coverage in France, flight costs covered and direct assistance of Campus France Paris

Stipend of up to 1704 euros per month

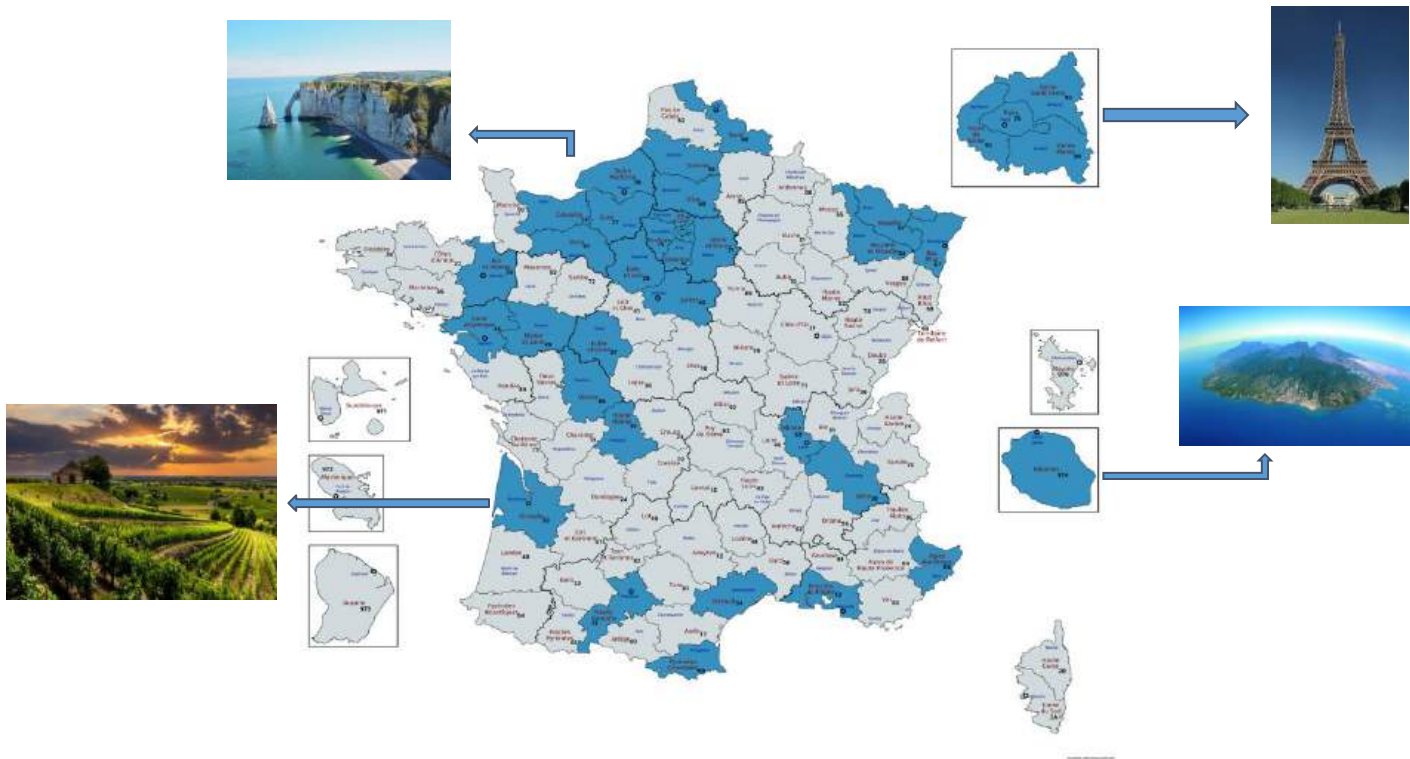


Website
<http://chateaubriand-fellowship.org>

Chateaubriand Fellows: Disciplines and Geographical Diversity



Where Chateaubriand Fellows Have Done Research in France



Partner Institutions at a Glance: INSERM



**In Europe and
worldwide**
+ 6,000
international
cooperations



- No.1 European academic applicant in the biomedical sector and No. 4 in the biotechnology sector worldwide
- 9th most innovative public research organization worldwide
- Major participants in H2020 (230 EU projects; 80 ERC)

13,371 staff



- 5,104 civil servants (2,142 researchers)
- 3,035 contract staff and temporary workers
- 5,232 university-hospital personnel



**11,033 original
articles (2018)**
(> 50% Int^oal co-
pub.)



Patents and licenses

- A portfolio of 1,804 patent families
- 300 R&D partnerships

Partner Institutions at a Glance: CNRS



cnrs

With over 33,000 people and its exceptional interdisciplinary potential, the CNRS carries out research in all fields of knowledge.

- Math
- Physics
- Information Tec
- Nuclear and particle physics
- Earth Sciences
- Astronomy
- Humanities and Social Sciences
- Ecology and the Environment



CNRS has around 1,100 laboratories throughout France. The vast majority of these are joint research units (UMR) associated with a university, higher education establishment or research organization.

CNRS is also a major player on the international stage. It has :

- a very **high level of co-publications** with foreign partners (60% of total publications)
- **6 International Research Centers**, strategic institutional dialogues between CNRS and a foreign university to face tomorrow's challenges (2 in the United States)
- **hundreds of projects** with foreign research teams and **80 joint laboratories abroad**
- a strong international network with **offices in 10 countries**



In 2023, the CNRS joined the Chateaubriand fellowship program and have already co-funded 14 fellowships.

Partner Institutions at a Glance: INRIA



INRIA is the French Institute for Research in Computer Science and Automation

There are 3900 researchers and engineers amongst 215 INRIA teams across 10 research centers

For 35 years, Inria has supported the creation of tech companies, launching more than 230 start-ups. Some of these have been acquired by global leaders such as Microsoft, Dassault Systèmes, IBM and Apple.

Since 2013, INRIA have supported 29 Chateaubriand Fellows conduct research in France.

Partner Institutions at a Glance: Université Paris Saclay

université
PARIS-SACLAY

As a leading university in Europe and the world, it covers the fields of science and engineering, life sciences and health, and humanities and social sciences. The university's science policy closely intertwines research and innovation, incorporating both basic and applied science to tackle major societal challenges.

Université Paris-Saclay currently represents 13% of France's research potential.



Since 2017, UPS have supported 40 Chateaubriand Fellows conduct research in France.

2025-2026 Call For Applications

Interested in Applying?

Eligibility Requirements:

1. You must be currently working on your PhD
2. You must be registered in an American University
3. All Stem and Health research topics are eligible

Benefits:

1. Monthly allowance (up to 1750€ per month). The Chateaubriand Fellowship can be a complementary source of funding, if you are applying for and receive other scholarships and fellowships, this will not prohibit you from receiving the fellowship.
2. Support for roundtrip airfare to France
3. Support for health insurance while abroad.

Site: <https://www.chateaubriand-fellowship.org/Eligibility-Guidelines-STEM>

2025-2026 Call For Applications

Interested in Applying?

Required Documents:

1. Detailed description of your thesis research
2. Letter of agreement from your US thesis advisor agreeing that part of your thesis will be co-supervised by a French colleague
3. Letter of invitation from your project advisor in France agreeing to co-supervise part of your thesis
4. At least one letter of recommendation (an additional letter of recommendation is OK, but not required)

Site: <https://www.chateaubriand-fellowship.org/Eligibility-Guidelines-STEM>

2025-2026 Call For Applications Timeline

Application Period Will be Open from
October 7th, 2024 - January 10th, 2025

October 7th, 2024 - Application Period Opens

January 10th, 2025 - Application period closes

January 2025 - March 2025 - Evaluations by MESRI in France

April 2025 - Evaluations by the Office for Science & Technology

Mid/End of May 2025 (Before Memorial Day Weekend) - Laureats selected and notified

2024-2025 Call For Applications

Additional Resources

Confirm your eligibility to participate in the program. Eligibility requirements and required documents are listed here on the Chateaubriand Website

<https://www.chateaubriand-fellowship.org/Eligibility-Guidelines-STEM>

The link to the application can be found here

STEM: <https://form.jotform.com/212654433523148>

HSS: <https://form.jotform.com/212593768594068>

Common questions and answers can be found on the Chateaubriand website

<https://www.chateaubriand-fellowship.org/FAQ.html>.

If you need additional assistance, feel free to contact our Chateaubriand coordinators, Richard Burke (STEM), at stem.coordinator@chateaubriand-fellowship.org or Laurence Menager (HSS) at hss.coordinator@chateaubriand-fellowship.org



Thank you!

Our websites:

www.france-science.com

<https://villa-albertine.org/>